

# High Incidence of *Plasmodium knowlesi* Infection in the Interior Division of Sabah, Malaysian Borneo

Tiek Ying Lau, Wan.Fen.Joveen-Neoh, and Ka.Lung.Chong

**Abstract**—*Plasmodium knowlesi* had been recognized as the fifth human malaria parasite due to its wide distribution of naturally acquired infection among the human populations in many parts of Southeast Asia. The aim of this molecular epidemiological study was to determine the incidence of human malaria parasites with special attention to *P.knowlesi* in four districts in the interior division of Sabah, Malaysian Borneo. Nested-PCR assays were used to identify the presence of *Plasmodium* species in the DNA extracted from 243 dried blood spots collected for six months in year 2010 from patients suspected to have malaria. A total of 107 (44%) of the samples were positive for *Plasmodium sp.* based on genus-specific nested-PCR detection. Among these *Plasmodium* positive samples, there were 63 (58.9%) single *P.knowlesi* infection and two cases of mixed-species infection with *P.knowlesi* (1 *P.knowlesi/P.falciparum* and 1 *P.knowlesi/P.vivax*). DNA sequencing of 20 randomly selected *P.knowlesi* isolates from this study showed that these isolates were similar with the sexual type of naturally acquired *P.knowlesi* in human. *P.knowlesi* was the most prevalent *Plasmodium sp.* in this region and it had been consistently found in all the four study sites with the highest incidence in the Tenom district which accounted for 53.8% (35 cases) of all *P.knowlesi* cases reported in this region. This preliminary study provides a clearer picture on the actual transmission of the fifth human malaria parasites in the interior division of Sabah. The high incidence and widespread of potentially fatal *P.knowlesi* infection in this region should pose an important concern where proper treatment and management is needed timely.

**Index Terms**—Malaysian Borneo, Molecular epidemiology, Malaria, *Plasmodium knowlesi*.

## I. INTRODUCTION

*Plasmodium knowlesi*, a malaria parasite of Old World monkeys [1] has been recognized in 2008 by World Health Organization (WHO) as the fifth *Plasmodium* parasites known to be infective to human [2]. This primate malaria parasite, which originally thought to be restricted to macaques in Southeast Asia has found to cause significant infection in human populations. Naturally acquired *P.knowlesi* infection in humans have been reported in several

geographical regions in Southeast Asia since the large focus of cases in Kapit Division of Sarawak State, Malaysian Borneo which was reported seven years ago [3]. Previous epidemiological studies on malaria have shown that the incidence of *P.knowlesi* were considerably high in Sarawak and Sabah, Malaysian Borneo [3]-[4]; Kalimantan, Indonesian Borneo [5]; Peninsular Malaysia [6]; Thailand [7]-[8]; Singapore [9]; the Philippines [10]; Vietnam [11]-[12] and Myanmar [13].

This potentially life-threatening parasite was previously heavily misdiagnosed as *P.malariae*, a benign human malaria parasite due to the similar morphology of the parasites at certain asexual stages. Compared with *P.malariae*, *P.knowlesi* is a fast progressing, quartetian malaria parasite and has been reported to cause wide spectrum of disease, can lead to high parasitemia and cause death [6]. The disease progression of this pathogenic *Plasmodium* species is comparable to *P.falciparum* malaria, which has been recognized as the most virulent type of human malaria as approximately 1 in 10 knowlesi malaria patients in Kapit Hospital reported to develop potentially fatal complications [14].

Conventional diagnostic techniques such as microscopic examination of asexual stages of *Plasmodium* on thick and thin blood films are unable to distinguish early trophozoites of *P.knowlesi* from *P.falciparum* and later erythrocytic stages from *P.malariae* [3]. Until now, microscopic examination of blood films still remains as the gold standard in malaria diagnosis. This conventional method is indeed difficult to detect mixed infections, low parasitemia especially in the case of *P.knowlesi*. Hence, molecular tools such as PCR have been widely used for accurate diagnosis of this species.

The aim of this cross-sectional study was to accurately determine the transmission and distribution of *P.knowlesi* in the interior division of Sabah, Malaysian Borneo which is covered by primary and secondary jungle or forest fringe, an area of potential spread of *P.knowlesi* where the vector mosquito is spread as well as a suitable habitat for natural hosts (long and pig-tailed macaques).

## II. METHODOLOGY

### A. Study sites and sample collection

This study was conducted in Keningau, Tambunan, Tenom and Nabawan districts in the interior division of Sabah. This region is hilly and largely covered by primary and secondary rainforest.

Ethical clearance was obtained from the Ethical Committee of Ministry of Health Malaysia and the Ethical

Manuscript received June 14, 2011; revised June 26, 2011. This work was supported by Biotechnology Research Institute of University Malaysia Sabah.

T. Y. Lau is with the Biotechnology Research Institute, Universiti Malaysia Sabah, 88400 Kota Kinabalu, Sabah, Malaysian Borneo (phone: +6088-320000, Ext. 5597; fax: +6088-320993; e-mail: sophialau@ums.edu.my).

W.F. Joveen-Neoh is with Biotechnology Research Institute, Universiti Malaysia Sabah, 88400 Kota Kinabalu, Sabah, Malaysian Borneo (e-mail: joveen\_n@hotmail.com).

K.L Chong was with the Outpatient Department of Keningau Hospital, 89007, Keningau, Sabah, Malaysian Borneo (e-mail: pbdckl@hotmail.com).

Committee of Universiti Malaysia Sabah to conduct this study prior to sample collection. Patients' verbal and written consent were obtained before their blood was taken.

Samples were collected for six months in year 2010 by the medical laboratory staffs of the respective hospitals. Patients attending Hospital Keningau, Hospital Tenom, Hospital Tambunan and Klinik Kesihatan Nabawan who suspected to be infected with malaria and had requested for Blood Film for Malaria Parasites (BFMP) were recruited in this study.

Three spots of total volume of 25  $\mu$ l of blood each were spotted on chromatography paper (Whatman 3MM). Normal blood samples taken from healthy individuals with no history of malaria infection were used as negative control in this study. Microscopic examination of the *Plasmodium* species presence in the Giemsa-stained thick and thin blood films were performed by the skilful microscopist of the respective hospitals who has no knowledge of the PCR results.

### B. DNA extraction and nested-PCR amplification of samples

DNA was extracted from the dried blood spots on filter paper with InstaGene™ (BioRad Laboratories, Inc, CA, USA) as described previously [15]. One negative control was included in each batch of DNA extraction to ensure no contamination occurs. The extracted DNA was stored at -20°C to be used as DNA template for detection of malaria parasites by nested PCR amplification. Positive controls for *P.falciparum*, *P.vivax*, *P.malariae*, *P.ovale* and *P.knowlesi* were included in all nested-PCR speciation assay.

*Plasmodium* species were identified by nested-PCR using *Plasmodium* genus- and species-specific primers derived from the small subunit ribosomal RNA (*ssrRNA*) as described elsewhere [3]. The nest-1 PCR amplification using *Plasmodium* genus-specific primers was carried out in 50  $\mu$ l reaction mixture containing 0.25  $\mu$ M of each primer (rPLU1 and rPLU5), 1X Promega GoTaq® Flexi Buffer, 3 mM of MgCl<sub>2</sub>, 0.2 mM each deoxynucleoside triphosphate, 1.25 U of GoTaq® DNA polymerase (Promega, USA) and 15  $\mu$ l of DNA template. PCR amplification was carried out using the following conditions: 94°C for 4 min, 30 cycles of 94°C for 30 sec, 55°C for 1 min and 65°C for 1.5 min, followed by 65°C for 5 min. Two  $\mu$ l of nest-1 amplicon was used as template DNA in nest-2 PCR amplification. The nest-2 PCR was performed in 20  $\mu$ l reaction mixture containing similar concentrations of primers and other constituents with the exception for 2 mM MgCl<sub>2</sub> and 0.5 U GoTaq®DNA polymerase. Nest-2 PCR amplification conditions were similar with the nest-1, except for 58°C annealing temperature for *Plasmodium* genus-specific primers (rPLU3 and rPLU4) and 62°C for species-specific primers (rFAL1/rFAL2, rVIV1/rVIV2, rMAL1/rMAL2, pmk8/pmk9 and rOVA1/rOVA4) [16]-[17]. The nest-2 PCR amplification products were analyzed by gel electrophoresis and staining with ethidium bromide prior to visualize under ultraviolet transillumination.

### C. Confirmation of *P.knowlesi* isolates based on *ssrRNA* gene

DNA sequencing reaction was performed on 20 randomly selected *P.knowlesi* positive samples from the four study sites in order to confirm the presence of *P.knowlesi*. Nest-2 PCR

was performed by using primer pair pmk8/rPLU5 and genus-specific nest-1 PCR amplicon was served as template. The PCR was performed in 20  $\mu$ l reaction mixture containing similar concentrations of primers and other constituents with the species-specific nest-2 PCR. PCR amplification was carried out using the following conditions: 94°C for 4 min, 45 cycles of 94°C for 30 sec, 55°C for 1 min and 72°C for 1 min, followed by 72°C for 5 min.

Gel extraction and purification was carried out on the PCR product using the QIAquick Gel Extraction kit (QIAGEN, Inc., USA) according to the manufacturer's protocol prior to bidirectional DNA sequencing.

Forward and reverse strand of DNA sequence for each isolate were assembled by using SEQMAN program (LaserGene, DNASTAR Inc., USA). The contig of each isolate was analyzed with BLAST search in NCBI. The DNA sequences of the 20 *P.knowlesi* isolates were aligned with 18 reference sequences of *P.knowlesi ssrRNA* from GenBank database by using CLUSTAL W program in MEGA version 5.0 software. Maximum Likelihood phylogenetic analysis was performed on the aligned *P.knowlesi* by using *ssrRNA* of *P.lophurae* as outgroup to study the genetic relatedness of *P.knowlesi* isolated from the interior division of Sabah with *P.knowlesi* from other geographical regions.

## III. RESULTS

### A. Incidence of *P.knowlesi* in the interior division of Sabah based on nested-PCR

Nest-2 PCR amplification of *ssrRNA* gene of *Plasmodium* genus using primer pair rPLU3/rPLU4 and *P.knowlesi* using primer pair pmk8/pmk9 produced amplicon of approximately 240 bp (Fig. 1) and 157 bp respectively (Fig. 2). Analysis of the nest-2 genus- and species-specific PCR showed that *Plasmodium* sp. infections were detected in 107 (44%) of 243 samples collected at the four study sites in the interior division of Sabah, Malaysian Borneo throughout the six-months study.

Among these *Plasmodium* positive samples, 63 (58.9%) were positive for single *P.knowlesi* infection and 2 mixed infections (1 *P.knowlesi/P.falciparum* and 1 *P.knowlesi/P.vivax*). Forty (63.5%) of the single *P.knowlesi* infection were microscopically diagnosed as single *P.malariae* infection, three (4.8%) were reported as *P.vivax* single infection and three were diagnosed as mixed-infection of *P.falciparum/P.malariae* (4.8%) based on microscopic examination. Besides, there were 17 (27%) microscopically negative cases detected as single *P.knowlesi*. Two co-infection of *P.knowlesi* with either *P.falciparum* or *P.vivax* were microscopically diagnosed as single *P.falciparum* infection (Table 1).

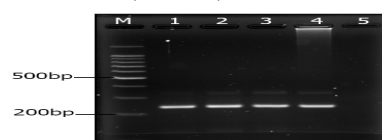


Fig. 1. A 2.5% agarose gel showing PCR products using primer rPLU3/rPLU4. M indicates 100 bp DNA ladder (Promega, USA); lane 1-3 show *Plasmodium* genus positive samples; lane 4 is *Plasmodium* sp. positive control and lane 5 is negative control.

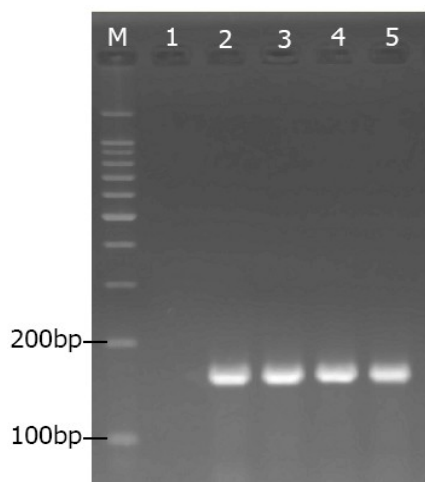


Fig. 2. A 2.5% agarose gel showing nest-2 PCR products using primer pmk8 and pmk9. M indicates 100 bp DNA ladder (Promega, USA); lane 1 is negative control, lane 2 to 4 are *P.knowlesi* samples and lane 5 is positive control.

TABLE 1. COMPARISON OF PCR AND MICROSCOPY RESULTS FOR THE DETECTION OF *P.KNOWLESI*

PCR Results	Microscopic Examination Results					No. of cases by PCR
	<i>P.f</i>	<i>P.v</i>	<i>P.m</i>	<i>P.f</i> and <i>P.m</i>	Neg.	
<i>P.k</i>	0	3	40	3	17	63
<i>P.k</i> and <i>P.f</i>	1	0	0	0	0	1
<i>P.k</i> and <i>P.v</i>	1	0	0	0	0	1
<b>Total</b>	<b>2</b>	<b>3</b>	<b>40</b>	<b>3</b>	<b>17</b>	<b>65</b>

*P.f*: *Plasmodium falciparum*; *P.v*: *Plasmodium vivax*  
*P.m*: *Plasmodium malariae*; *P.k*: *Plasmodium knowlesi*  
 Neg.: Negative

**B. Geographical distribution of *P.knowlesi* in the four study sites**

Across the four geographical locations in the interior division of Sabah, the incidence of *P.knowlesi* is highest in the Tenom district, which comprises 35 single infection of *P.knowlesi*. This is followed by 12 single *P.knowlesi* cases from Tambunan district; 10 single infection of *P.knowlesi* and two mix-infection of *P.knowlesi* (1 *P.knowlesi/P.falciparum* and 1 *P.knowlesi/P.vivax*) from Keningau district. Even though there were only six single *P.knowlesi* cases detected from the Nabawan district, this figure nonetheless comprised of 50% of all samples collected from this study site (Fig. 3).

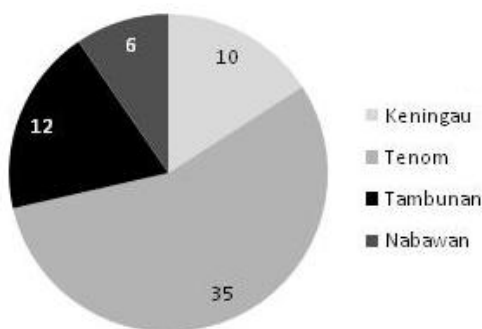


Fig.3. Incidence of *P.knowlesi* in each study sites of the interior division of Sabah

**C. Distribution of *P.knowlesi* according to age group**

*P.knowlesi* infections were detected in all range of age groups in the study population with the youngest patient was 1 year old and the oldest was 74 years old. The prevalence of *P.knowlesi* is highest among the patients between 21 to 30 years old (17 cases), followed by 31 to 40 years old (13 cases), 11 cases of patients between 11-20 years old and 10 cases from patients between 41 to 50 years old (Table 2).

TABLE 2. DISTRIBUTION OF *P.KNOWLESI* ACCORDING TO AGE GROUP

Age group	Number of <i>P.knowlesi</i> infection
0 – 10	3
11 – 20	11
21 – 30	17
31 – 40	13
41 – 50	10
51 – 60	6
61 – 70	3
71 – 80	1
No record	1
<b>Total</b>	<b>65</b>

**D. Confirmation of *P.knowlesi* isolates based on *ssrRNA* gene**

Nest-2 PCR amplification of *ssrRNA* gene of *P.knowlesi* using primer pair pmk8/rPLU5 generated amplicon of approximately 1081 bp. The gel purified PCR product was shown in Fig. 4.

BLAST search analysis of the nucleotide sequence of 20 randomly selected *P.knowlesi* isolates showed that all the sequenced *P.knowlesi* isolates from the interior division of Sabah were similar with the sexual type of *P.knowlesi* in human. The nucleotide sequences of *ssrRNA* gene of *P.knowlesi* generated in this study were deposited in GenBank under the accession numbers of JF714667-JF714686.

Maximum likelihood phylogenetic analysis showed that all the 20 *P.knowlesi* isolates from the interior division of Sabah were clustered with the sexual type of human *P.knowlesi* isolates from other geographical regions. However, these isolates were clearly distinct from asexual type of *P.knowlesi* isolated from non-human primates (Fig. 5).

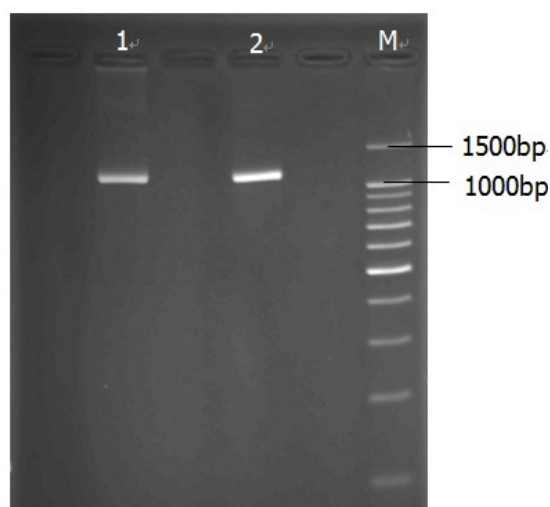


Fig. 4. 1.5% agarose gel showing gel purified PCR products following amplification using primer pair pmk8 and rPLU5. Lane M indicates 100 bp DNA ladder (Promega, USA); lane 1 and 2 indicate gel purified PCR products of approximately 1081 bp.

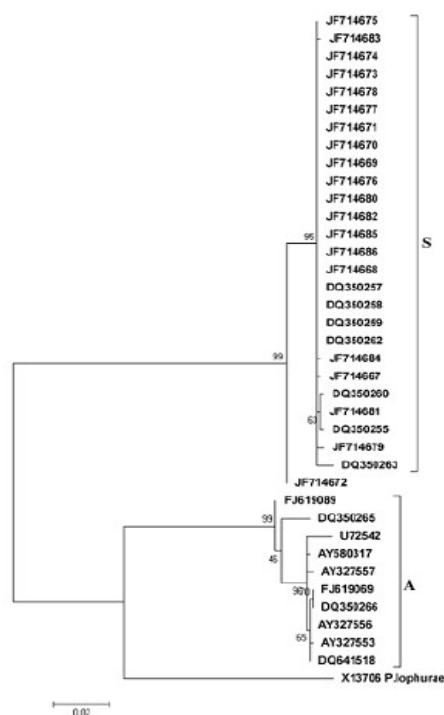


Fig. 5. Maximum likelihood phylogenetic analysis of *ssrRNA* gene of *P. knowlesi*. Cluster S indicates sexual type of human *P. knowlesi* while cluster A indicates asexual type of *P. knowlesi* isolated from non-human primates. Figures on the branches are bootstrap percentage on 1000 replicates.

#### IV. DISCUSSION

Since the report on the large focus of naturally acquired *Plasmodium knowlesi* in human in the Kapit division of Sarawak [3], human *P. knowlesi* malaria has been reported in many countries in the region of Southeast Asia, which has suitable habitat for the natural hosts of *P. knowlesi*, namely the long- and pig-tailed macaques. The incidence of *P. knowlesi* has been reported throughout the Southeast Asia regions range from Thailand, Vietnam, Myanmar, Peninsular Malaysia, Singapore, Malaysian and Indonesian Borneo to the Philippines [4]-[13]. Hence, it is possible that this parasite poses an important public health issue in these regions.

This preliminary finding showed that *P. knowlesi* accounted for more than half of all the positive malaria cases in the interior division of Sabah. Although microscopic examination did not show *P. knowlesi* in any samples examined, PCR findings demonstrated that *P. knowlesi* were detected in all the *P. malariae* cases identified microscopically. Besides, the nested-PCR also detected *P. knowlesi* in microscopy *P. falciparum* as well as *P. vivax* positive cases.

Mixed-species infections with *P. knowlesi* which were only found in the Keningau district were misdiagnosed by microscopy as single *P. falciparum* infection. Nevertheless, there were *P. knowlesi* single infection cases misidentified as *P. falciparum* and *P. malariae* mixed-infection microscopically. Detection of *P. knowlesi* in a remarkable portion of microscopy false-negative samples demonstrated nested-PCR is sensitive enough to detect low parasitemia of *P. knowlesi* which were not detected by microscopy. This

epidemiological finding clearly demonstrated that PCR is a more sensitive and specific method to detect mixed-infection which is tend to be overlooked by microscopic diagnosis especially when one parasite is present at lower parasite density. Molecular-based PCR detection is also specific to detect *P. knowlesi* which is unable to accurately diagnose based on microscopic examination.

*Plasmodium knowlesi* infection had been consistently distributed at the four study sites in the interior division of Sabah with the highest incidence of this parasite found in the Tenom district. The considerably high incidence of *P. knowlesi* in this region is not surprising as the interior division of Sabah occupies the southwest portion of Sabah and bordering on Sarawak, located at the hilly and valley area surrounded by the Crocker Mountain Range with dense primary and secondary forest, a suitable habitat for *P. knowlesi*'s natural host and the vector. *P. knowlesi* transmission had been reported to be restricted to the mosquito vector *Anopheles leucosphyrus* group [18], which are equally attracted to monkeys and humans in the forest fringe after dusk [19]. Past research had reported that human infections with *P. knowlesi* are not newly emergent in Southeast Asia and *knowlesi* malaria is a zoonosis with wild macaques as the reservoir hosts [20]. The ongoing ecological changes following uncontrolled deforestation, human migration might enable *P. knowlesi* to switch to humans as preferred host [20].

The prevalence of *P. knowlesi* is highest among the patients between 21 to 40 years old might be explained by the higher activity in the forest fringe or jungle by this group of people, causing higher chance of their exposure to the mosquito vector that brought the successful transmission of *P. knowlesi*. Besides, the living environment of the population in this region which is nearby the forest fringe posing them higher risk to be bitten by the *Anopheles sp.* mosquito that served as vector for the transmission of *P. knowlesi*. Our epidemiological data showed that the youngest and the eldest patient infecting from *P. knowlesi* was 1 year old and 74 years old, respectively, whereby limited outdoor or jungle activities were expected from this group of people.

DNA sequencing of *ssrRNA* gene from 20 randomly selected *P. knowlesi* isolates from this study confirmed the presence of *P. knowlesi* in the PCR positive *P. knowlesi* samples and eliminate the possibility of false positive result of *P. knowlesi*. This finding proved that *P. knowlesi* present in the interior division of Sabah and not *P. malariae* or other *Plasmodium sp.* as diagnosed by microscopic examination. Besides, phylogenetic analysis showed that *P. knowlesi* isolates from this study were clustered with the sexual type of human *P. knowlesi* isolated from other geographical region. This finding was consistent with previous study on the naturally acquired human *P. knowlesi* [3], [4].

The trophozoite, schizont, and gametocyte stages of *P. knowlesi* are morphologically resemble those of *P. malariae* and the ring stage of *P. knowlesi* is indistinguishable from *P. falciparum*, leading to the misdiagnosis of this parasite microscopically [3]. Our epidemiological study showed that *P. knowlesi* was either misdiagnosed as *P. malariae* (majority), *P. falciparum*, *P. vivax* or mixed-infection of *P. falciparum* and *P. malariae*.

*P.knowlesi* has 24-h erythrocytic cycle, the shortest of all the known human and nonhuman primate malarials [21] and possibly fast disease progression. Therefore, timely diagnosis and treatment is crucial to reduce the risk of complications as misdiagnosis of potentially lethal *P.knowlesi* as *P.malariae* which is benign may cause delay in appropriate treatment [6]. Accurate *Plasmodium* species identification is crucial for the proper clinical management and control strategies. Wide distribution and emerging of human *P.knowlesi* which is potentially lethal and easily misdiagnose as less dangerous *P.malariae* on microscopy should pose an important alert to the clinicians and laboratory personnel.

## V. CONCLUSIONS

This preliminary molecular epidemiological finding highlights the wide distribution of *P.knowlesi* zoonosis in the interior division of Sabah. *P.knowlesi* was in fact the most prevalent *Plasmodium* parasite infecting the population in this region within the study period. Accurate epidemiological data serves as an important foundation in the effectiveness of malaria control strategy. The finding of this study provided accurate information and revealed the actual distribution of *P.knowlesi* in the interior division of Sabah which is located in the hilly area that is surrounded by forest. Large scale of epidemiological study should be carried out in other geographical locations in Sabah in order to determine the actual transmission of this potentially lethal human malaria parasite in this state.

## ACKNOWLEDGMENT

We thank Balbir Singh and colleagues from Malaria Research Centre, University Malaysia Sarawak for providing the *Plasmodium* species positive controls; the directors and staff of the Sabah hospitals in Tambunan, Keningau, Nabawan and Tenom for their assistance throughout the study; Rafidah Ali and Erle Stanley Henry from Keningau District Health Office and Hospital Queen Elizabeth, respectively for the assistance in sample collection; Sabah Health Department for approving this study and all who provided blood samples.

## REFERENCES

- [1] P. C. C. Garnham. Malaria parasites and other haemosporidia. Oxford, United Kingdom: Blackwell Scientific. 1966.
- [2] N.J. White. Malaria. In: Cook CG, ed. Manson's tropical diseases, 20th ed. London: WB Saunders, 1996. pp. 1087-1164.
- [3] B. Singh, K.S. Lee, A. Matusop, A. Radhakrishnan, S.S.G. Shamsul, J. Cox-Singh, A. Thomas, and D. Conway. A large focus of naturally acquired *Plasmodium knowlesi* infections in human beings. *Lancet*. 2004, 363: 1017-1024.
- [4] K.S. Lee, J. Cox-Singh, G. Brooke, A. Matusop, and B. Singh. *Plasmodium knowlesi* from archival blood films: further evidence that human infections are widely distributed and not newly emergent in Malaysian Borneo. *Int. J. Parasitol.* 2009, 39(10): 1125-1128.

- [5] E. Sulistyarningsih, L.E. Fitri, T. LÖscher, and N. Berens-Riha. Diagnostic difficulties with *Plasmodium knowlesi* infection in human. *Emerg. Infect. Dis.* 2010, 16: 1033-1034.
- [6] J. Cox-Singh, T.M.E. Davis, K.S. Lee, S.S.G. Shamsul, A. Matusop, S. Ratnam, H.A. Rahman, D.J. Conway, and B. Singh. *Plasmodium knowlesi* malaria in humans is widely distributed and potentially life threatening. *Clin. Infect. Dis.* 2008, 46: 165-171.
- [7] S. Jongwutiwes, C. Putaporntip, T. Iwasaki, T. Sata, and H. Kanbara. Naturally acquired *Plasmodium knowlesi* malaria in human, Thailand. *Emerg. Infect. Dis.* 2004, 10: 2211-2213.
- [8] C. Putaporntip, T. Hongrimumuang, S. Seethamchai, T. Kobasa, K. Limkittikul, L. Cui, and S. Jongwutiwes. Differential prevalence of *Plasmodium* infections and cryptic *Plasmodium knowlesi* malaria in humans in Thailand. *J. Infect. Dis.* 2009, 199: 1143-1150.
- [9] O. T. Ng, E.E. Ooi, C.C. Lee, P.J. Lee, L.C. Ng, S.W. Pei, T.M. Tu, J.P. Loh, and Y.S. Leo. Naturally acquired human *Plasmodium knowlesi* infection, Singapore. *Emerg. Infect. Dis.* 2008, 14: 814-816.
- [10] J. Luchavez, F. Espino, P. Curameng, R. Espina, D. Bell, P. Chiodini, D. Nolder, C. Sutherland, K.S. Lee, and B. Singh. Human infections with *Plasmodium knowlesi*, the Philippines. *Emerg. Infect. Dis.* 2008, 14: 811-813. R. Dewri, and N. Chakraborti. Simulating recrystallization through cellular automata and genetic algorithms. *Modelling Simul. Mater. Sci. Eng.* 2005, 13 (3): 173-183.
- [11] P. Van den Eede, H.N. Van, C. Van Overmeir, I. Vythilingam, T.N. Duc, X. le Hung, H.N. Manh, J. Anné, U. D'Alessandro, and A. Erhart. Human *Plasmodium knowlesi* infections in young children in central Vietnam. *Malar. J.* 2009, 8:249.
- [12] J. Cox-Singh. *Knowlesi* malaria in Vietnam. *Malar. J.* 2009, 8:269.
- [13] N. Jiang, Q. Chang, X. Sun, H. Lu, J. Yun, Z. Zhang, M. Wahlgren, and Q. Chen. Co-infections with *Plasmodium knowlesi* and other malaria parasites, Myanmar. *Emerg. Infect. Dis.* 2010, 16: 1476-1478.
- [14] C. Daneshvar, T.M.E. Davis, J. Cox-Singh, M.Z. Rafe'ee, S.K. Zakaria, P.C. Divis, and B. Singh. Clinical and laboratory features of human *Plasmodium knowlesi* infection. *Clin. Infect. Dis.* 2009, 49: 852-860.
- [15] J. Cox-Singh, S. Mahayet, M.S. Abdullah, and B. Singh. Increased sensitivity of malaria detection by nested polymerase chain reaction using simple sampling and DNA extraction. *Int. J. Parasitol.* 1997, 27: 1575-1577.
- [16] G. Snounou, S. Viriyakosol, X.P. Zhu, W. Jarra, L. Pinheiro, V.E. do Rosario, S. Thaithong, and K.N. Brown. High sensitivity of detection of human malaria parasites by the use of nested polymerase chain reaction. *Mol. Biochem. Parasitol.* 1993, 61: 315-320.
- [17] T.M.E. Davis, B. Singh, and G. Sheridan. Parasitic procrastination: late presenting ovale malaria and schistosomiasis. *Med. J. Australia.* 2001, 175: 146-148.
- [18] W.E. Collins, P.G. Contacos, and E.G. Guinn. Studies on the transmission of simian malarials. II. Transmission of the H strain of *Plasmodium knowlesi* by *Anopheles balabacensis*. *J. Parasitol.* 1967, 53: 841-844.
- [19] I. Vythilingam, C.H. Tan, M. Asmad, S.T. Chan, K.S. Lee, and B. Singh. Natural transmission of *Plasmodium knowlesi* to humans by *Anopheles latens* in Sarawak, Malaysia. *Trans. R. Soc. Trop. Med. Hyg.* 2006, 100: 1087-1088.
- [20] K. Lee, P.C.S. Divis, S.K. Zakaria, A. Matusop, R.A. Julin, D.J. Conway, J. Cox-Singh, and B. Singh. *Plasmodium knowlesi*: Reservoir hosts and tracking the emergence in humans and macaques. *PLOS Pathog.* 2011, 7(4): e1002015.
- [21] W. Chin, P.G. Contacos, W.E. Collins, M.H. Jeter, and E. Alpert. Experimental mosquito-transmission of *Plasmodium knowlesi* to man and monkey. *Am. J. Trop. Med. Hyg.* 1968, 17: 355-358.